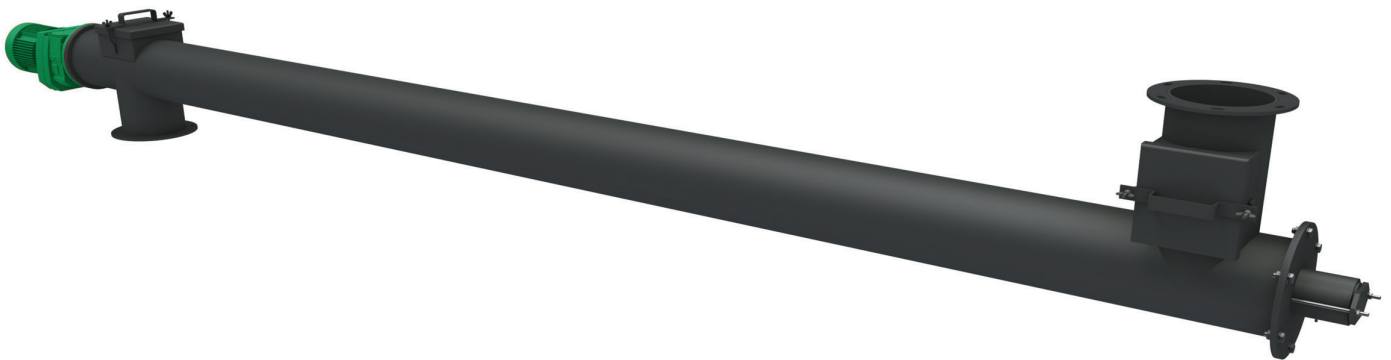


ASH SCREW CONVEYOR

An ash screw conveyor is intended for transporting of ash generated in the biomass combustion process. The ash can be transported to the container or basket intended for that purpose. These conveyors are available in 2 modules W-1 and W-2 that can be combined in one ash transport system. The W-2 conveyor can be set at an angle from 0 to 180 degrees depending on the customer's needs.

This equipment can be adapted for ash transporting from various types of grates or dust removing equipment, such as a multicyclone or a bag filter. The ash screw conveyor produced by the Runarsson company is an economical solution due to its low energy consumption.



Advantages:

- low energy consumption
- strong heavy-duty construction
- construction resistant to wear and corrosion
- dustproof construction
- easy operation and maintenance

ASH SCREW CONVEYOR



Technical data

Type	160 - W-1	160-W-2	220-W-1	220-W-2
Motor power kW	0,55	1,1	0,75	1,1
Screw rotations/min	14	15	14	15
Performance m ³ /h	2,8	3,0	2,8	3,0
Weight kg	115	115	115	115

Depending on the ash amount, the Runarsson company offers screw conveyors of various diameters from fi160 to fi550.