

BOTTOM PUSH ROD OUT-FEEDER

A bottom push rod out-feeder is used to out-feeding of large biofuel amounts from large rectangular silos. The equipment guarantees that the entire storage area is used and the material is automatically taken out of the silo in intervals that are adjusted to the boiler load.

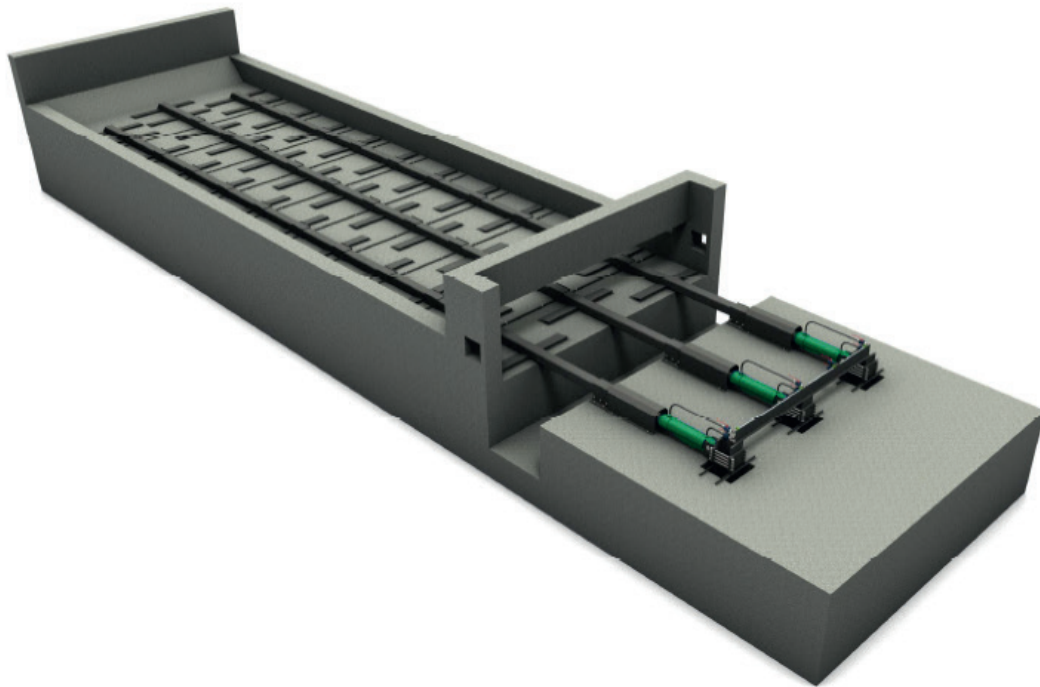
The out-feeders of this type are adapted to operate with a bark conveyor. Additionally, they can be equipped with a shredding roller to ensure even fuel distribution in the conveyor. Durable scrapers are adapted to out-feeding of the fuel with large dimensions in order to increase the out-feeder's performance. At the customer's request, the number of scrapers can be increased.



Advantages

- accurate control of the material out-feeding
- adapted for fuel with high humidity – bark, woodchips
- shredding roller for even fuel distribution as an option
- designed to operation with a bark conveyor
- minimum requirements for operation and maintenance
- heavy duty

BOTTO PUSH ROD OUT-FEEDER



Technical data

Type	Inside length of the silo	Width of the silo	Hydraulic cylinders stroke length
125 - M	5300 –11300mm	3000-1500mmm	125/65 x 500
160 - M	Additional scrapers can be added every 1200 mm.	Additional scrapers can be added every 1500 mm.	160/80 x 500
200 - M			200/100 x 500
300 - M	The silo length can be adapted to the customer's requirements.	The silo width can be adapted to the customer's requirements..	300/150 x 500